

CAR-O-LINER®



CMI™ 3000 II

VERSATILE & UPGRADEABLE

CMI™ 3000II

VERSATILE & UPGRADEABLE

The **CMI3000II** is the latest generation of MIG/MAG welding machines. Combining simplicity with state-of-the-art technology, the **CMI3000II** is a versatile, upgradable MIG/MAG welding machine using flash-card and inverter technology. The digital intelligence in the Car-O-Liner **CMI3000II**, 400V makes it easy to find the program relevant to the individual car make, even those

in hardenable aluminium. And since the joining of special alloy thin plates requires a gentle process this has been built into the memory of the **CMI3000II**. The results speak for themselves; the corrosion and strength properties of the material are maintained and only little post-treatment is required owing to a minimum of weld spatter and heat input.

SIMPLICITY AND STATE-OF-THE-ART TECHNOLOGY



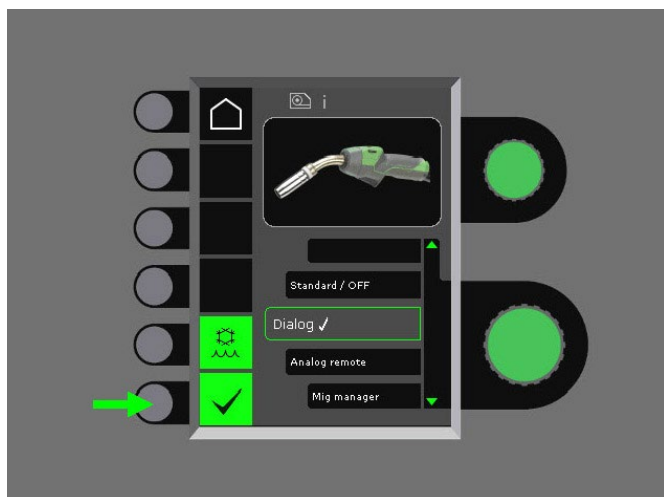
CMI3000II IS PERFECT FOR MODERN CAR BODY WORK WHERE HEAVY DEMANDS ARE PLACED ON THE SHOP TO CONTINUALLY ADJUST THEIR PROCESSES TO ENSURE HIGH QUALITY WELDING OPERATIONS.

PROCESS IMPROVEMENT - LESS POST-TREATMENT

The **CMI3000II** has been developed for use in light industrial applications, and for modern car body work where heavy demands are placed on the shop to continually adjust their processes to ensure high quality welding operations. MIG brazing high-tensile steel is a specialty of **CMI3000 II**.

DESIGNED TO MEET

FUTURE DEMANDS



PROGRAM WIZARD™

The **Program Wizard** is a built-in guide in the control panel which allows the welder to find the right welding program for an assignment without having to browse through all available programs. There is no risk of making wrong choices. By asking three or four simple questions, for example about the type of wire and gas, the **Program Wizard** will guide you to the appropriate program for your job.

LOWER POWER CONSUMPTION — SMALLER ENVIRONMENTAL FOOTPRINT

CMI3000II is environmentally friendly owing to new welding technology and use of low-energy components. An important factor now that CO₂ emissions and increasing power consumption are important in regards to our environmental footprint.

THE RESULT SPEAKS FOR ITSELF

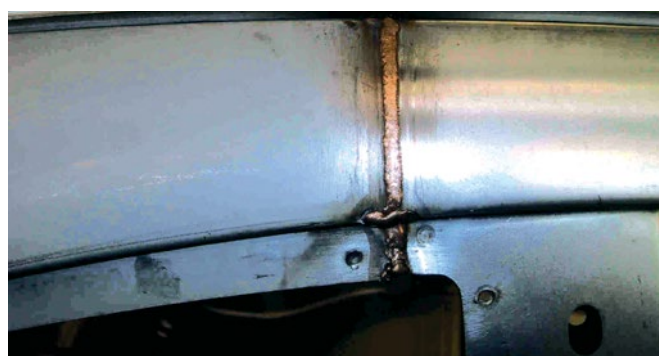
The corrosion and strength properties of the material are maintained and only little post-treatment is required owing to a minimum of weld spatter and heat input. And, there is hardly any deformation of car body plates.

REMOTE CONTROL WITH MIG-A TWIST®

CMI3000II comes with the **MIG-A-Twist** torch in an award-winning design. The unique, turnable swan neck of the **MIG-A-Twist** allows access to hard-to-reach places. It is possible to mount different modules on top of the torch for adjustment of the most important welding parameters.

QUATTRO PULSE

The **CMI™3000II** is equipped with the revolutionary **Quattro Pulse** which enables the welder to produce the optimum droplet pinch off of the wire. This is particularly important when welding thin materials as it keeps the heat input to a minimum consequently maintaining the strength and anti-corrosion coating of the steel while at the same time producing a tig-like weld.



MIG BRAZING

Many years of close cooperation with leading car manufacturers has resulted in a wealth of experience in the joining of special alloyed steels. MIG brazing with the **CMI3000II** is the perfect choice when welding galvanized and high strength steels as this method allows for the maintenance of anti-corrosion coatings and structural strength.

FEATURES AND BENEFITS

- **TRUE SPRAY PULSE FUNCTION** will not damage heat sensitive materials like aluminum or galvanized steel
- **UPGRADEABLE**, transfer of machine software and latest features by SD card - free download
- **PULSE AND QUATTRO PULSE** modes for heat sensitive materials
- **DESIGNED FOR THE FUTURE** — to meet coming demands for materials and gas combinations
- **LARGE, USER-FRIENDLY CONTROLS** allow technician to focus on welding
- **ERGONOMIC**, adjustable welding torches for easy access
- **PUSH-PULL TORCH** for large operating range
- **VARIETY OF WIRE DRIVE ROLLS** for all types of wire
- **TWO TORCHES** — Dialog and sequence torch

“

**PROCESS IMPROVEMENT
GIVES LESS
POST-TREATMENT**

”

PRODUCT INFORMATION

AND TECHNICAL DATA

STANDARD COMPONENTS

CMI3000II 3 × 400V

Programmable for GM/PSA
ML240, Twist R, 4m, 1.0 ALU nozzle

Part No. 34556

CMI3000II 3 × 230 - 500V

Programmable for GM/PSA
ML240 Twist R, 4m, 1.0 ALU nozzle
(Configured with autotransformer)

Part No. 34558

OPTIONAL ACCESSORIES

ALUMINIUM WIRE

ITEM	PART. NO.
AlMg 5 1.0mm 2kg	35178
AlMg 5 1.0mm 6kg	34344

GALVANIZED WIRE

ITEM	PART. NO.
SG1 0.8 mm 5kg	34345
SG1 0.8 mm 15kg	34346

MIG-BRAZING WIRE PSA

ITEM	PART. NO.
CuAl 8 1.0mm 5kg	34049

MIG-BRAZING WIRE GM

ITEM	PART. NO.
CuSi 3 1.0mm 5kg	34202
Gas regulator 30L	34203
Adapter for 5kg reel	33509

TECHNICAL DATA

CMI3000II

SPECIFICATION	PARAMETER
Input voltage	230V 50 - 60Hz 1ph
Fuse	16A
Effective mains current	20 - 160A
Current range DC	90V
Duty cycle 100% at 20°C	300A
Duty cycle 100% at 40°C	270A
Duty cycle 80% at 40°C	300A
Open circuit consumption	40W
Mains voltage max.	18.1A
Efficiency rate	0.85
Power factor	0.90
Open circuit voltage	69 - 76V
Application class	CE, S
Protection class	IP23
Norm	IC60974 -1, -2, -5, -10
Dimensions	92.5×52.4×90.6cm (36.4×20.6×35.6in)
Weight (incl. supply cable)	58kg (127lb)

WE CARE ABOUT BODY SHOPS

EXCELLENCE. INNOVATION. PASSION.

CAR-O-LINER ACADEMY

We are a competence development partner for the automotive industry, our main objective is to improve quality, safety and profitability for body shops.

THE TRAINING YOU NEED



RIGHT PERSON



RIGHT TIME



RIGHT COURSE



RIGHT COMPLEXITY

We enhance our customer's abilities by identifying the real competence and development needed. Offering solutions to meet these needs and accelerate the business growth.

WE OFFER THE SOLUTION



WE IMPLEMENT THE TRAINING



WE FIX THE ROOT OF THE PROBLEMS



WE MEASURE RESULTS

CUSTOMER SUPPORT

The Car-O-Liner Group headquarters is located in Gothenburg, Sweden, with subsidiaries located in Norway, Germany, France, United Kingdom, Italy, China, India, United States, Thailand and Middle East.

Wherever you are, Car-O-Liner can provide customer with product information, training, support or data subscription/renewal.

CHINA:

+86 10 6789 2123

info@car-o-liner.cn

FRANCE:

+33 1 69 52 7750

france@car-o-liner.net

GERMANY:

+49 (0) 6073 74487-0

info.germany@car-o-liner.se

INDIA:

+91 844 757 0029

info.india@car-o-liner.se

ITALY:

+39 059 468 310

info.carolineritalia@car-o-liner.se

MIDDLE EAST/AFRICA:

+971 6 566 8702

info@caroliner.ae

NORWAY:

+47 3343 0270

info@car-o-liner.no

SWEDEN:

+46 31 721 1050

info@car-o-liner.se

THAILAND:

+66 2 026 32 55

info.apac@car-o-liner.se

UNITED KINGDOM:

+44 1788 574 157

info@car-o-liner.co.uk

UNITED STATES:

1-800 521 9696

info@car-o-liner.com

FIND A DISTRIBUTOR NEAR YOU

Rely on our professional service teams in over 70 countries to define which Car-O-Liner product suits you best.

Please visit our website: www.car-o-liner.com

CAR-O-LINER®

34602W CMI3000II 2018-11 BROCHURE-WEB EN



www.car-o-liner.com



Car-O-Liner® (2018) is a trademark of **Snap-on®** Incorporated. All rights reserved.

Product images are for illustrative purposes only and may differ from the actual product. **Car-O-Liner** reserves the right to modify any content without prior notice.